



**DOWNSPOUT  
PROTECTION**

**MADE IN USA**

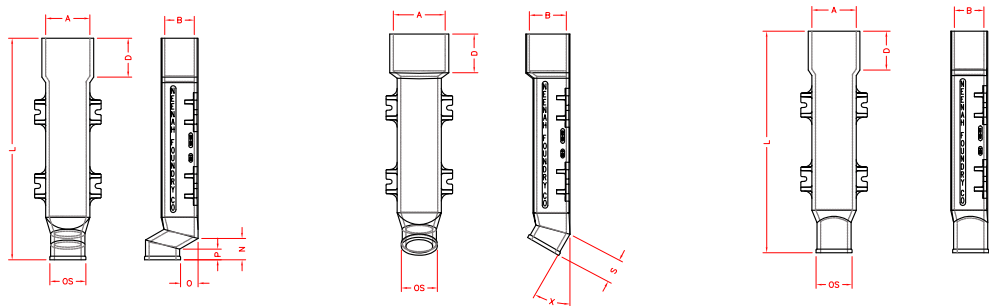
**NEENAH** **IF**  
FOUNDRY



**PROTECT** your rain water leader  
**CONNECT** your rain water leader sub-drain system  
**ENVIRONMENT** Neenah products are 100% environmentally friendly  
**COATINGS** Custom coatings available upon request.  
**ACCESSORIES** Extensions and adaptors for custom applications.

# Withstands the Harshest of Weather Conditions

Our cast iron downspouts offer appealing aesthetics, exceptional longevity and freedom from maintenance. No matter where they're placed, you can be confident Neenah Foundry products will stand strong in any climate.



## Neenah's Downspouts Offer



### Exceptional Durability

- Eliminate maintenance problems associated with non-iron materials



### Aesthetic Appeal

- Recommended to be furnished and installed in their natural unpainted state for best long-term, maintenance-free performance and aesthetic appeal
- Unpainted downspouts will develop a permanent patina that remains the same throughout their lifetime
- Powder coat paint is available upon request in a variety of colors



### Superior Performance

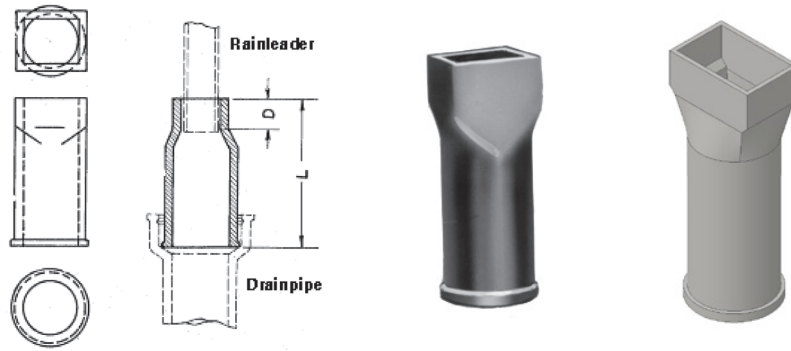
- The durability of cast iron withstands abuse
- The most durable, long-term product available

## The Benefit of Unpainted Downspouts

Upon exposure to moisture, cast iron downspouts form a temporary iron oxide scale before darkening to a patina, which is permanent throughout the life of the installation. Look at manhole covers in the street to see how the color matures.

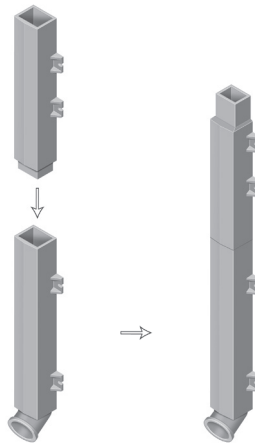
## ADAPTERS

Catalog	Shape Type	Inside Top Bell (BxA or Dia)	Outside Spigot (OS)	Length (L)	Inside Top Bell Depth (D)
4927-A	Straight Adapter	3x4	4-5/8" Dia	11-1/2"	2-1/2"
4927-A1	Straight Adapter	2x3	3-7/8" Dia	11-1/2"	1-3/4"
4927-B	Straight Adapter	3x4-3/4	4-7/8" Dia	13-3/4"	2"
4927-C	Straight Adapter	4x4	4-7/8" Dia	13-1/2"	2-1/4"
4927-D	Straight Adapter	4-3/8x5-3/8	4-7/8" Dia	14-1/2"	2-3/4"
4927-F	Straight Adapter	4x5	5-7/8" Dia	14-3/8"	2-3/8"
4927-G	Straight Adapter	5x7	7-7/8" Dia	14-3/8"	1-3/8"



## EXTENSIONS

Catalog	Shape Type	Inside Top Bell (BxA or Dia)	Length (L)	Inside Top Bell Depth (D)
4929-E453	Extension	4x5	30"	n/a
4929-E454	Extension	4x5	40"	n/a
4929-E463	Extension	4x6	30"	5-1/4"
4929-E464	Extension	4x6	40"	5-1/4"
4929-E573	Extension	5x7	30"	5-1/4"
4929-E574	Extension	5x7	40"	5-1/4"

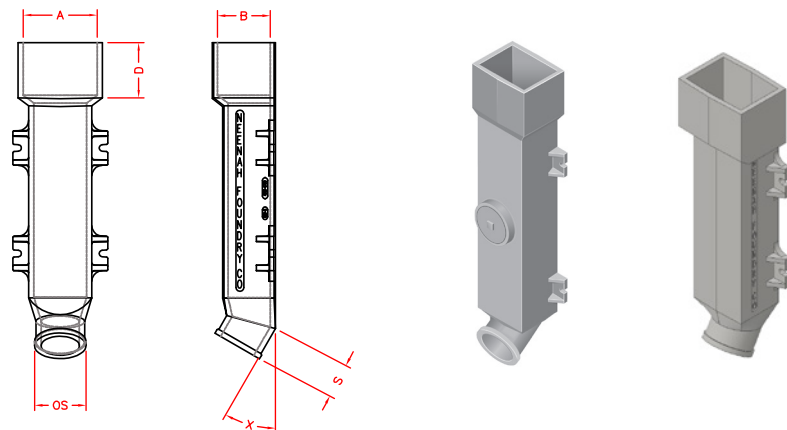






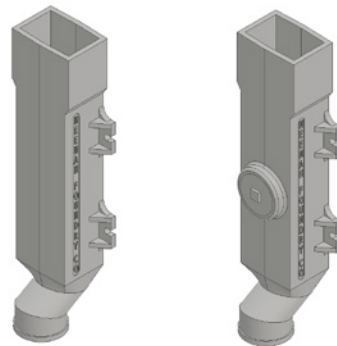
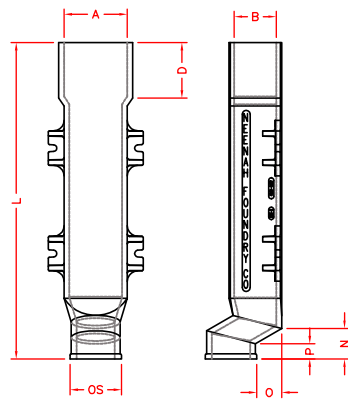
## ANGULAR DOWNSPOUT SHOES

Catalog	Inside Top Bell (BxA or Dia)	Outside Spigot (OS)	Length (L)	Inside Top Bell Depth (D)	Angular Spigot Length (S)	Angle (X)	Extension Available
4929-A1	3x4	4-7/8" Dia	30"	5-1/4"	3-1/4"	30	
4929-A2	3x4	4-7/8" Dia	40"	5-1/4"	3-1/4"	30	
4929-A3	4x5	4-7/8" Dia	14-1/2"	3"	4-3/8"	45	
4929-A4	4x5	4-7/8" Dia	30"	5-1/4"	3-1/4"	30	Yes
4929-A5	4x5	4-7/8" Dia	40"	5-1/4"	3-1/4"	30	Yes
4929-A6	4x6	4-7/8" Dia	30"	5-1/4"	3-1/4"	30	Yes
4929-A7	4x6	4x6	36-1/4"	4-1/2"	8-1/2"	60	
4929-A8	4x6	4-7/8" Dia	40"	5-1/4"	3-1/4"	30	Yes
4929-A9	5x7	4-7/8" Dia	30"	5-1/4"	3-1/4"	30	Yes
4929-A10	5x7	4-7/8" Dia	40"	5-1/4"	3-1/4"	30	Yes
4929-A11	3x4	6-1/4" Dia	32"	5-1/4"	4-1/16"	45	
4929-A12	3x4	6-1/4" Dia	42"	5-1/4"	4-1/16"	45	
4929-A14	4x5	6-1/4" Dia	32"	n/a	4-1/16"	45	Yes
4929-A15	4x5	6-1/4" Dia	42"	n/a	4-1/16"	45	Yes
4929-A17	4x6	6-1/4" Dia	32"	5-1/4"	4-1/16"	45	Yes
4929-A18	4x6	6-1/4" Dia	42"	5-1/4"	4-1/16"	45	Yes
4929-A19	5x7	6-1/4" Dia	32"	5-1/4"	4-1/16"	45	Yes
4929-A20	5x7	6-1/4" Dia	42"	5-1/4"	4-1/16"	45	Yes
4929-A21	6-1/2x9	7x9	36"	3"	10"	90	
4929-A22	6"x6"	4-7/8" Dia	40"	5-1/4"	3-1/4"	30	
Cleanouts (4")							
4929-A1C	3x4	4-7/8" Dia	30"	5-1/4"	3-1/4"	30	
4929-A2C	3x4	4-7/8" Dia	40"	5-1/4"	3-1/4"	30	
4929-A4C	4x5	4-7/8" Dia	30"	5-1/4"	3-1/4"	30	Yes
4929-A5C	4x5	4-7/8" Dia	40"	5-1/4"	3-1/4"	30	Yes
4929-A6C	4x6	4-7/8" Dia	30"	5-1/4"	3-1/4"	30	Yes
4929-A8C	4x6	4-7/8" Dia	40"	5-1/4"	3-1/4"	30	Yes
4929-A9C	5x7	4-7/8" Dia	30"	5-1/4"	3-1/4"	30	Yes
4929-A10C	5x7	4-7/8" Dia	40"	5-1/4"	3-1/4"	30	Yes
4929-A11C	3x4	6-1/4" Dia	32"	5-1/4"	4-1/16"	45	
4929-A12C	3x4	6-1/4" Dia	42"	5-1/4"	4-1/16"	45	
4929-A14C	4x5	6-1/4" Dia	32"	n/a	4-1/16"	45	Yes
4929-A15C	4x5	6-1/4" Dia	42"	n/a	4-1/16"	45	Yes
4929-A17C	4x6	6-1/4" Dia	32"	5-1/4"	4-1/16"	45	Yes
4929-A18C	4x6	6-1/4" Dia	42"	5-1/4"	4-1/16"	45	Yes
4929-A19C	5x7	6-1/4" Dia	32"	5-1/4"	4-1/16"	45	Yes
4929-A20C	5x7	6-1/4" Dia	42"	5-1/4"	4-1/16"	45	Yes
4929-A22C	6"x6"	4-7/8" Dia	40"	5-1/4"	3-1/4"	30	



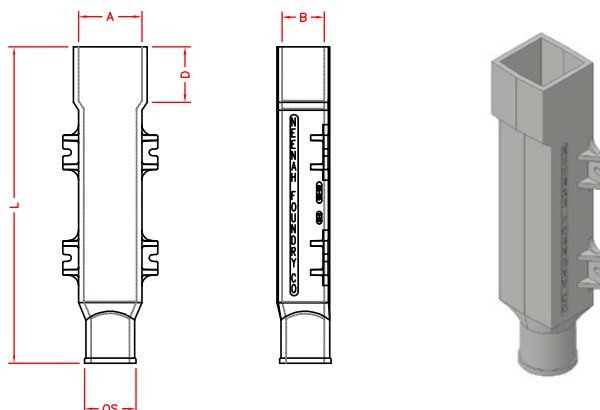
# OFFSET DOWNSPOUT SHOES

Catalog	Inside Top Bell (BxA or Dia)	Outside Spigot (OS)	Length (L)	Inside Top Bell Depth (D)	Total Offset Length (N)	Offset (O)	Offset Spigot Length (P)	Extension Available
4929-O	6x6	7-7/8" Dia	30"	n/a	12"	1-13/16"	6"	
4929-O1	3x4	4-7/8" Dia	20-1/2"	2-1/2"	12-1/4"	2-1/2"	8-1/4"	
4929-O2	3x4	4-7/8" Dia	30"	5-1/4"	2-7/8"	2-1/2"	1-7/16"	
4929-O3	3x4	4" Dia	32"	3-1/8"	13-1/2"	2-3/8"	11"	
4929-O4	3x4	4-7/8" Dia	40"	5-1/4"	2-7/8"	2-1/2"	1-7/16"	
4929-O5	4x5	4-7/8" Dia	28"	2-1/4"	19-1/2"	2-1/4"	11-3/4"	
4929-O6	4x5	4-7/8" Dia	30"	5-1/4"	2-7/8"	2-1/2"	1-7/16"	Yes
4929-O7	4x5	4-7/8" Dia	36"	2"	8-1/2"	2-1/2"	4-1/4"	
4929-O8	4x5	4-7/8" Dia	40"	5-1/4"	2-7/8"	2-1/2"	1-7/16"	Yes
4929-O9	4x6	4-7/8" Dia	30"	5-1/4"	2-7/8"	2-1/2"	1-7/16"	Yes
4929-O10	4x6	4-7/8" Dia	39-3/4"	3-1/2"	9-1/2"	3-3/8"	6"	
4929-O11	4x6	4-7/8" Dia	40"	5-1/4"	2-7/8"	2-1/2"	1-7/16"	Yes
4929-O12	5x6	6-5/8" Dia	39-1/4"	2-1/2"	7-1/2"	2-1/2"	5"	
4929-O13	5x7	4-7/8" Dia	30"	5-1/4"	2-7/8"	2-1/2"	1-7/16"	Yes
4929-O14	5x7	4-7/8" Dia	40"	5-1/4"	2-7/8"	2-1/2"	1-7/16"	Yes
4929-O15	6-5/8x8-1/4	8-5/8" Dia	28"	5"	2-7/8"	2-1/2"	1-1/2"	
4929-O16	4x6	7-7/8" Dia	30"	5-1/4"	5-3/4"	2-1/2"	1-7/16"	
4929-O17	6x6	4-7/8" Dia	40"	5-1/4"	2-7/8"	2-1/2"	1-7/16"	
4929-O18	5x5	4-7/8" Dia	40"	5-1/4"	2-7/8"	2-1/2"	1-7/16"	
4929-OSP	4x4	4-7/8" Dia	40"	5-1/4"	2-7/8"	2-1/2"	1-7/16"	
Cleanouts (4")								
4929-O2C	3x4	4-7/8" Dia	30"	5-1/4"	2-7/8"	2-1/2"	1-7/16"	
4929-O4C	3x4	4-7/8" Dia	40"	5-1/4"	2-7/8"	2-1/2"	1-7/16"	
4929-O5C	4x5	4-7/8" Dia	28"	2-1/4"	19-1/2"	2-1/4"	11-3/4"	
4929-O6C	4x5	4-7/8" Dia	30"	5-1/4"	2-7/8"	2-1/2"	1-7/16"	Yes
4929-O8C	4x5	4-7/8" Dia	40"	5-1/4"	2-7/8"	2-1/2"	1-7/16"	Yes
4929-O9C	4x6	4-7/8" Dia	30"	5-1/4"	2-7/8"	2-1/2"	1-7/16"	Yes
4929-O11C	4x6	4-7/8" Dia	40"	5-1/4"	2-7/8"	2-1/2"	1-7/16"	Yes
4929-O13C	5x7	4-7/8" Dia	30"	5-1/4"	2-7/8"	2-1/2"	1-7/16"	Yes
4929-O14C	5x7	4-7/8" Dia	40"	5-1/4"	2-7/8"	2-1/2"	1-7/16"	Yes
4929-O15C	6-5/8x8-1/4	8-5/8" Dia	28"	5"	2-7/8"	2-1/2"	1-1/2"	
4929-O17C	6x6	4-7/8" Dia	40"	5-1/4"	2-7/8"	2-1/2"	1-7/16"	
4929-O18C	5x5	4-7/8" Dia	40"	5-1/4"	2-7/8"	2-1/2"	1-7/16"	
4929-O19C	4x4	4-7/8" Dia	40"	5-1/4"	2-7/8"	2-1/2"	1-7/16"	



## STRAIGHT DOWNSPOUT SHOES

Catalog	Inside Top Bell (BxA or Dia)	Outside Spigot (OS)	Length (L)	Inside Top Bell Depth (D)	Extension Available
4929-S	6x6	4-7/8" Dia	40"	5-1/4"	
4929-S1	3x4	4-7/8" Dia	30"	5-1/4"	
4929-S2	3x4	4-7/8" Dia	40"	5-1/4"	
4929-S3	4x5	4-7/8" Dia	30"	5-1/4"	Yes
4929-S4	4x5	4-7/8" Dia	40"	5-1/4"	Yes
4929-S5	4x6	4-7/8" Dia	30"	5-1/4"	Yes
4929-S6	4x6	4-7/8" Dia	40"	5-1/4"	Yes
4929-S7	5x7	4-7/8" Dia	30"	5-1/4"	Yes
4929-S8	5x7	4-7/8" Dia	40"	5-1/4"	Yes
4929-S9	5x5	4-7/8" Dia	30"	5-1/4"	
4929-S10	5x5	4-7/8" Dia	40"	5-1/4"	
Cleanouts (4")					
4929-S1C	3x4	4-7/8" Dia	30"	5-1/4"	
4929-S2C	3x4	4-7/8" Dia	40"	5-1/4"	
4929-S3C	4x5	4-7/8" Dia	30"	5-1/4"	Yes
4929-S4C	4x5	4-7/8" Dia	40"	5-1/4"	Yes
4929-S5C	4x6	4-7/8" Dia	30"	5-1/4"	Yes
4929-S6C	4x6	4-7/8" Dia	40"	5-1/4"	Yes
4929-S7C	5x7	4-7/8" Dia	30"	5-1/4"	Yes
4929-S8C	5x7	4-7/8" Dia	40"	5-1/4"	Yes
4929-S9C	5x5	4-7/8" Dia	30"	5-1/4"	
4929-S10C	5x5	4-7/8" Dia	40"	5-1/4"	



## ROUND DOWNSPOUT SHOES

CATALOG	Shape Type	Inside Top Bell (BxA or Dia)	Outside Spigot (OS)	Length (L)	Inside Top Bell Depth (D)	Total Offset Length (N)	Offset (O)	Offset Spigot Length (P)
4926-C	Straight	4-7/8" Dia	4-1/2" Dia	63"	3"			
4926-G1	Offset	4-3/8" Dia	4-7/8" Dia	30"	3"	10-3/4"	2-1/2"	6"
4926-O	Offset	6" Dia	4-7/8" Dia	40"	3"	2-7/8"	2-1/2"	1-7/16"
Cleanouts (3")								
4926-G1C	Offset	4-3/8" Dia	4-7/8" Dia	30"	3"	10-3/4"	2-1/2"	6"



In support of the Green Initiative, Neenah Foundry is pleased to report that our products contain a minimum of 85% recycled content in the form of a minimum of 35% consumer generated scrap metal and a minimum of 50% industrial-generated scrap metal.





### BUY AMERICAN

The American Recovery and Reinvestment Act (ARRA) of 2009 was enacted to stimulate the economy by incentivizing the use of American-made products. By choosing Neenah cast iron products, not only are you getting the quality and durability you need while supporting American jobs, you could also qualify for federal funding on your project.



### GO GREEN

In support of the Green Initiative, Neenah Foundry is pleased to report that our products contain a minimum of 85% recycled content in the form of a minimum of 35% consumer-generated scrap metal and a minimum of 50% industrial-generated scrap metal.

**Neenah Foundry Company**  
Box 729, Neenah, Wisconsin 54957-  
0729

Phone: 800-558-5075 // 920-725-7000  
Fax: 920-729-3661  
Web: [www.neenahfoundry.com](http://www.neenahfoundry.com)

**NEENAH**   
FOUNDRY