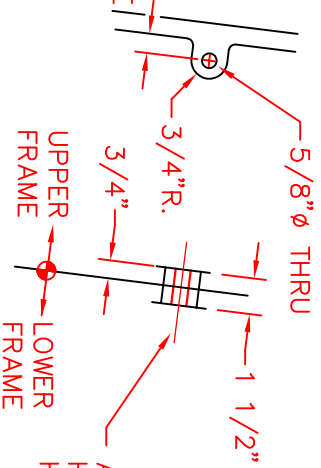


DETAIL - "A"
 ATTACHING LUG - (2) REQ'D.

FOR WRENCH CLEARANCE
 13/16" MIN.



ASSEMBLE WITH 1/2-13 x 2" S.S.
 HEX HEAD MACHINE BOLT C/W
 HEX NUT - (2) REQ'D.

NOTE: ALL DIMENSIONS SHOWN ARE IN ENGLISH
 COMPONENT NOS.: LOWER FRAME 3502-0046, UPPER FRAME 3502-0047,
 GRATE 3502-0015
 MATERIAL: CAST GRAY IRON ASTM A-48, CLASS 35B
 FINISH: NO PAINT
 WEIGHT: LOWER FRAME 265#, UPPER FRAME 80#, GRATE 180#

DR.	RKB	SCALE	TITLE:
CH.		1/8"=1"	R-3502-A INLET
APP.		DIM CHK.	WITH BOLTED UPPER FRAME
DATE	06-25-2009		

NEENAH
 FOUNDRY COMPANY
 NEENAH WISCONSIN 54956

NEF-3502390 B