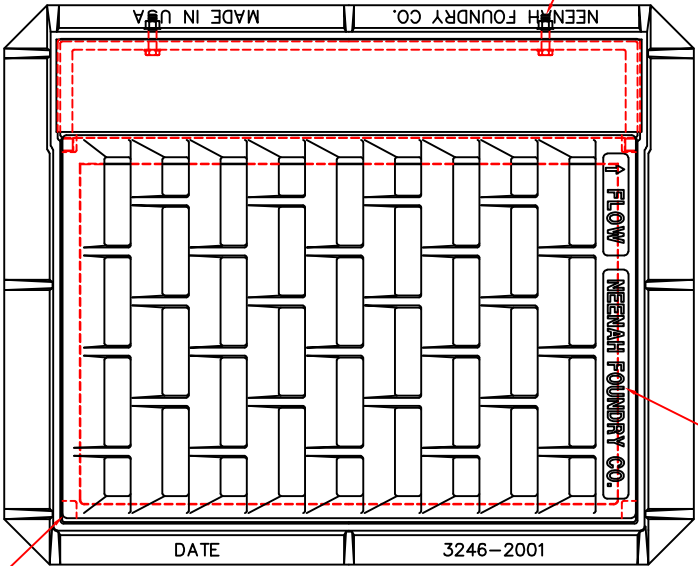
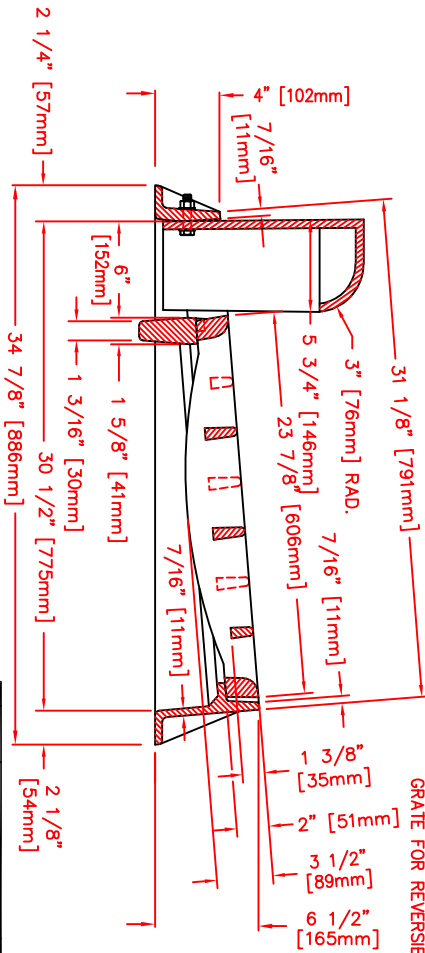


# 3246 360-2 B8

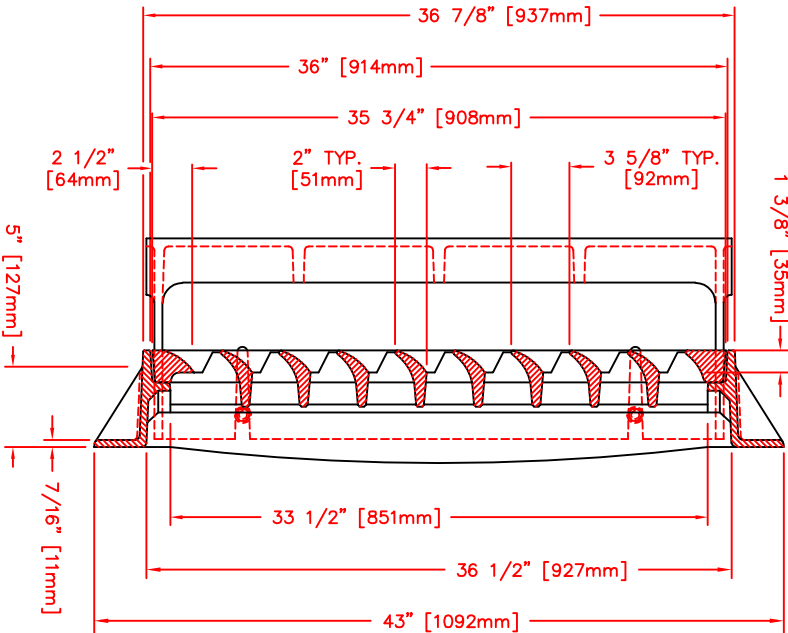
(2) 1/2" - 13 X 2 STEEL HEX. BOLT, HEX. NUT AND WASHERS TO BOLT CURB BOX TO FRAME



1" [25mm] LETTERING RAISED FLUSH w/ TOP



(4) POSITION NOTCH IN GRATE FOR REVERSIBILITY



NOTE: ALL DIMENSIONS SHOWN ARE IN ENGLISH AND [METRIC].  
 COMPONENT NO'S: FRAME 3246-2001, GRATE 3246-3000, CURB BOX 3246-0004  
 MATERIAL: CAST GRAY IRON ASTM A-48, CLASS 35B  
 FINISH: NO PAINT  
 WEIGHT: FRAME 200#, GRATE 196#, CURB BOX 140#

DATE	REV	DESCRIPTION
3-06-98	1	CHG. HEIGHT OF CURB BOX

DR.	E. REMME
CH.	
APP.	
DATE	4-09-97

DIM CHK.		SCALE	1/8"=1"	TITLE	R-3246-AL
					FRAME, TYPE "L" GRATE AND CURB BOX
					NEENAH FOUNDRY COMPANY NEENAH WISCONSIN 54956
					NF-3246 360