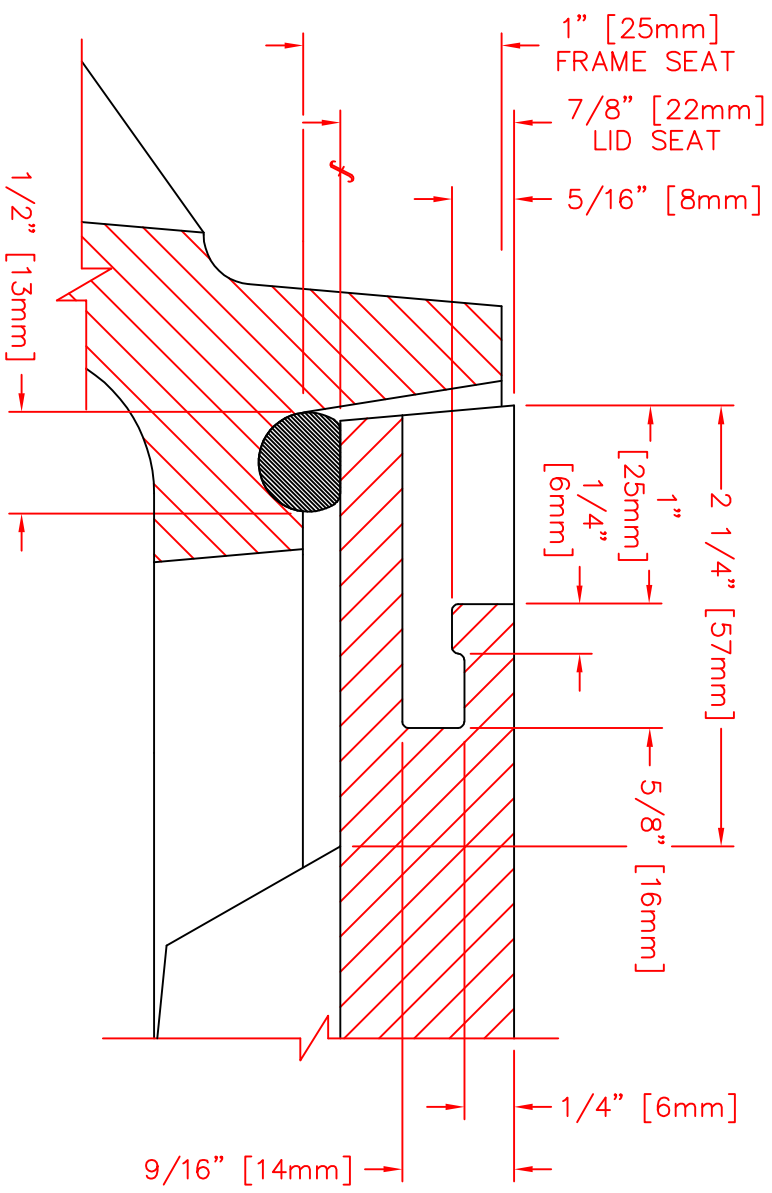
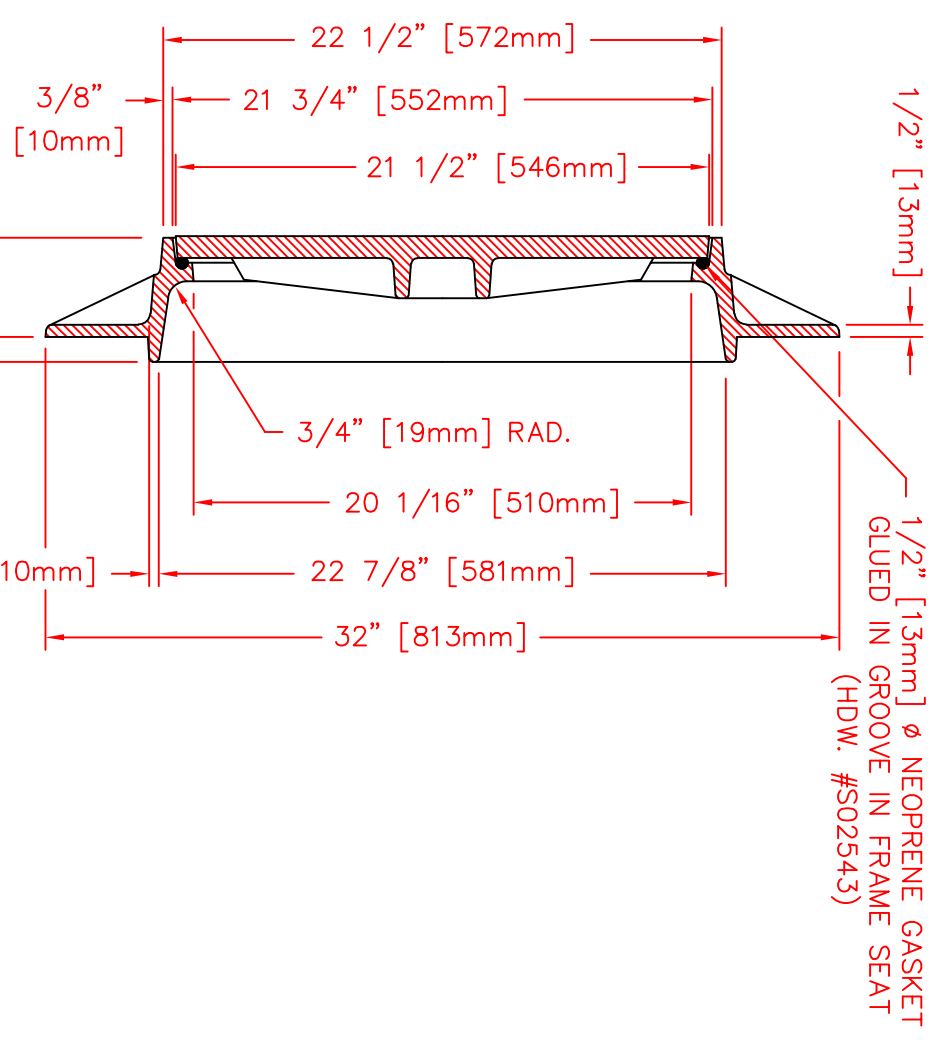


(4) 1" [25mm] DIA. ANCHOR BOLT HOLES ON A 29" [737mm] DIA. B.C. (EQUALLY SPACED)

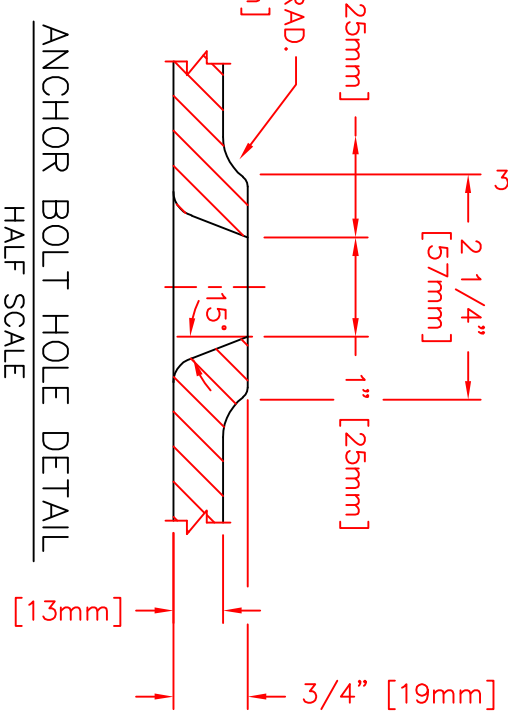
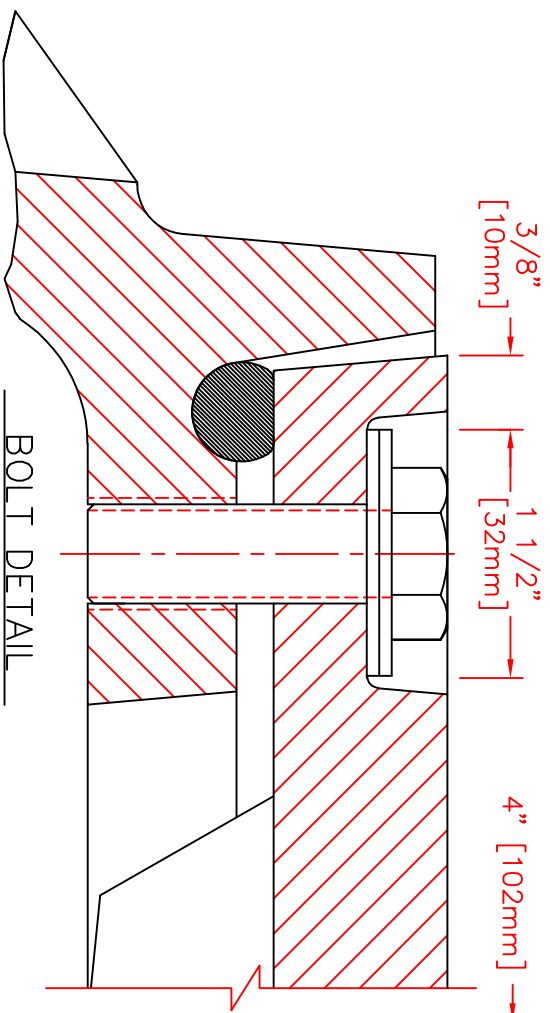
(3) 1/2" - 13 X 1 1/2" STNLS. STL. HEX. HD. CAP SCREW w/ WASHERS ON A 19 1/2" [495mm] DIA. B.C. (DRILL, TAP, & ASSEMBLE)  
 (3) BOLT PADS 3/4" [19mm] DEEP



1" [25mm] FRAME SEAT  
 7/8" [22mm] LID SEAT  
 5/16" [8mm]  
 1/4" [6mm]  
 2 1/4" [57mm]  
 1" [25mm]  
 1/4" [6mm]  
 5/8" [16mm]  
 1/4" [6mm]  
 9/16" [14mm]



1/2" [13mm]  $\phi$  NEOPRENE GASKET GLUED IN GROOVE IN FRAME SEAT (HDW. #S02543)



ANCHOR BOLT HOLE DETAIL  
 HALF SCALE

COMPONENT NO'S: FRAME 1915-2185; LID 1915-0179  
 MATERIAL: CAST GRAY IRON ASTM A-48, CLASS 35B  
 FINISH: NOT PAINTED  
 WEIGHT: FRAME 113#; LID 86#

CONCEALED PICK HOLE DETAIL  
 FULL SCALE

2-3-2003	BC TO 19-1/4 & RECESS TO 1-1/2	SMA
4-30-2002	CORRECTED PICKHOLE LOCATION PER CASTING	EAR
4-2-2001	ADDED POSITIONING NOTCH	LMA
05-16-96	REVISE FRAME DIMS PER PATT. SHOP	CSK
	REVISION	INT

DR.	E. REMME	SCALE	1/8"=1"	TITLE:	R-1915-S1 FRAME AND BOLTED SOLID LID
CH.		DIM CHK.			LETTERED "SANITARY SEWER"
DATE	3-26-96				