

Project Profile

Sky Harbor International Airport Trench

Sky Harbor International Airport is one of the largest airports in the United States based on passenger count. Through 2019, total passengers served has averaged over 40,000,000 passengers per year. Total operations (takeoffs and landings) has averaged over 425,000 operations per year.

Several large construction projects have been occurring at Sky Harbor over the last decade to improve the airport's infrastructure that have required large amounts of cast iron trench products.

Project Description

Sky Harbor has been in the process of reconstruction since 2013. The project has included:

- Terminal modernization, demolition and replacement
- Taxiway construction
- Maintenance expansion
- Construction of a transport rail system

Approximately 5,500 feet of Neenah Foundry 4993 series trench has been specified on the project to date. Additional trench will be needed for future expansion.

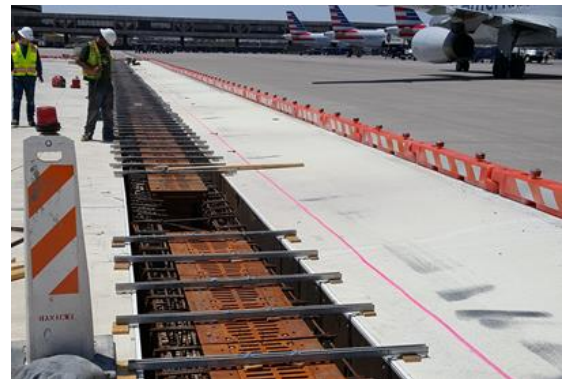
Project Deliverables

Neenah Foundry began delivering product for the project beginning in 2016. Deliverables include:

- Design drawings, certifications, installation guides
- 4,500 feet of 4993-DAB trench
- 240 feet of 4993-DAH hinged trench



Aerial view of Sky Harbor International Airport



4993 Trench Formed and ready for pouring.

Results

The 4993 trench frames and grates installed at Sky Harbor International Airport have become the standard specification for the airport. The trench has been performing as designed and will continue to be used at the airport for future projects.